

**ORDINANCE  
2005-44**

**AN ORDINANCE ADOPTING A FUTURE LAND USE  
MAP AMENDMENT TO THE WALTON COUNTY  
COMPREHENSIVE PLAN; SETTING FORTH THE  
AUTHORITY FOR ADOPTION; PROVIDING FOR  
SEVERABILITY; AND PROVIDING FOR AN  
EFFECTIVE DATE.**

WHEREAS, Chapter 163, Florida Statutes establishes the Local Government Comprehensive Planning and Land Development Regulation Act; and,

WHEREAS, Chapter 163, Florida Statutes requires local governments desiring to amend their comprehensive plan to prepare and adopt an amendment; and,

WHEREAS, Walton County has prepared a comprehensive plan map amendment for an unincorporated area of the county; and,

WHEREAS, Walton County held the requisite public hearings to afford public comment and to consider approval and adoption of the map amendment; and,

NOW THEREFORE BE IT ORDAINED BY THE BOARD OF COUNTY COMMISSIONERS OF WALTON COUNTY, FLORIDA, THAT:

Section I. This ordinance shall be known as the Walton County Comprehensive Plan Map Amendment # 05-O1-B.2.6.

Section II. The Walton County Comprehensive Plan Future Land Use Map is hereby amended changing Parcel Number(s) 28-2S-21-42405 Phase 1, Lots 1-16 and Phase II, Lots 51-56 consisting of approximately 3.0 acres from Coastal Center Mixed Use (CCMU) to Neighborhood Planning Area / Residential Preservation (NPNRP), located in the Bayside Subdivision.

Section III. An official, true and correct copy of the Future Land Use Map and amendments shall be filed with the Walton County Clerk and also maintained at the Walton County Planning and Development Services Division, which shall be responsible for the administration of the Comprehensive Plan.

Section IV. Severability. If any portion of this Ordinance should be declared unconstitutional or if the applicability of this Ordinance or any portion thereof should be held to be invalid, the validity of the remainder of the Ordinance shall not be affected by such invalidity.

Section V. Effective date. This Ordinance shall become effective as provided by law.

ADOPTED THIS 20<sup>th</sup> DAY OF November, 2005.

ATTEST:

Crystal Scoville  
Clerk of Courts

Scott A. Brannon  
Scott Brannon, Chairman  
Board of County Commissioners  
Walton County, Florida

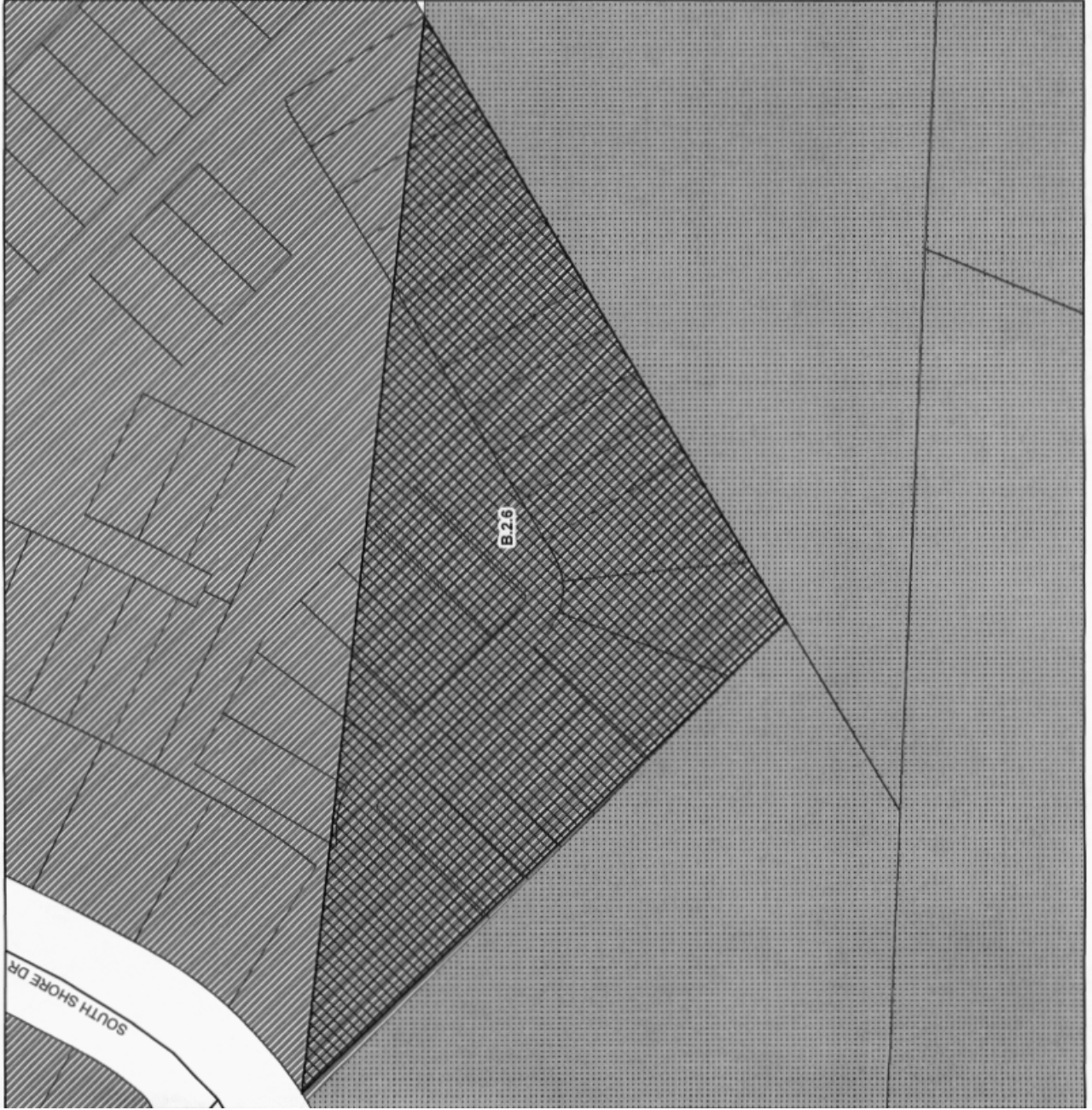
# LSA\_05-01-B.2.6

Total Acreage: 3

From: Coastal Center Mixed Use  
To: NPA/RP



- Streets
- Parcels
- Amendments
- Coastal Center Mixed Use
- Residential Preservation



PLANNING AND DESIGN SERVICES, INC. 2010  
THIS DOCUMENT IS THE PROPERTY OF PLANNING AND DESIGN SERVICES, INC. AND IS NOT TO BE REPRODUCED OR TRANSMITTED IN ANY FORM OR BY ANY MEANS, ELECTRONIC OR MECHANICAL, INCLUDING PHOTOCOPYING, RECORDING, OR BY ANY INFORMATION STORAGE AND RETRIEVAL SYSTEM, WITHOUT THE WRITTEN PERMISSION OF PLANNING AND DESIGN SERVICES, INC. THE INFORMATION CONTAINED HEREIN IS FOR GENERAL INFORMATION ONLY AND DOES NOT CONSTITUTE AN OFFER OF ANY FINANCIAL PRODUCT OR SERVICE. THE INFORMATION CONTAINED HEREIN IS NOT INTENDED TO BE USED AS A BASIS FOR INVESTMENT DECISIONS. THE INFORMATION CONTAINED HEREIN IS NOT INTENDED TO BE USED AS A BASIS FOR INVESTMENT DECISIONS. THE INFORMATION CONTAINED HEREIN IS NOT INTENDED TO BE USED AS A BASIS FOR INVESTMENT DECISIONS.